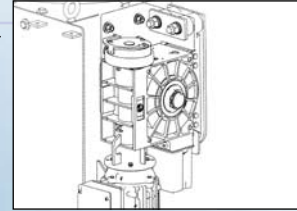




**DOOR HEADER**  
The top roll carries the door load with minimal deflection. Heavy-duty stub axel and end plates are load rated to support extreme weight capacity enhancing long term performance.

**COUNTERBALANCE SYSTEM**  
Offers consistently smooth operation due to the standard evenly balanced 100K torsion spring. A protective spring hood is also standard. (not shown)

**OR**  
**SPRINGLESS SYSTEM**  
Direct drive unit eliminates the need for chains and sprockets, resulting in lower maintenance costs.



**DRIVE UNIT**  
Die cut aluminum gearbox, electromagnetic spring operated break and thermally protected motor.

**WINDOW**  
Clear 255mm x 460mm PVC window enables traffic to be seen from both sides of the door. (not shown)

**CONTROL PANEL**  
ACS50, NEMA-4 and CUL listed. Standard controls are adjustable with automatic closing timer, emergency stop, two actuating push buttons and cycle counter.

**CURTAIN**  
Thick, 2-layer SBR and high tensile strength polyester provide superb resiliency in harsh environments. Albany Door Systems warrants the SBR fabric for the life of the door.

**SIDE FRAMES**  
Self-supporting, heavy-duty side frames and patented Windlok guide system provide more strength and a near airtight seal for windloads up to 142 km/hr.

**BOTTOM BEAM**  
Break away bottom beam that can be reset quickly reducing downtime and maintenance costs.



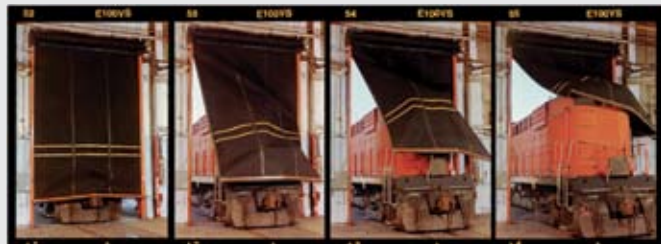
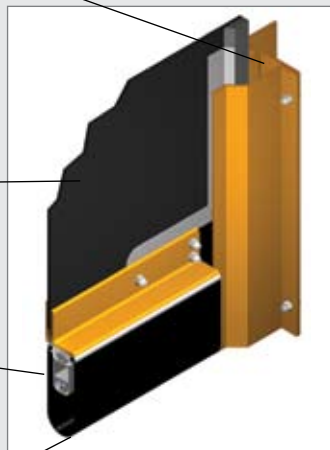
**THE WORLD'S TOUGHEST ROLL UP DOOR**  
The Re-Coil-Away can take extreme heavy impacts without damage. The curtain and break away bottom beam can be reset quickly without special tools.

Patented Windlok and steel guide systems produces tight seals and allows the door to withstand windloads up to 140 km/hr.

**SBR Rubber Door Curtain** delivers superior resistance to harsh elements.

**Watertight electrical reversing edge** is self-monitoring for fail safe operations.

**Rubber bottom profile** provides a tight floor seal.



Products shown may include additional options.



Waste Water Management



Automotive Dealership



Commercial Auto Cleaning



Automotive Dealership



Mining



Parking Facility

**Toll Free 1300 666 232**  
[www.albanydoors.com](http://www.albanydoors.com)

**NSW**  
4/465 Victoria Street  
Wetherill Park NSW 2164  
Ph: 02 9756 4330  
Fax: 02 9756 4340

**TASMANIA**  
4/190 Invermay Road  
Launceston TAS 7250  
Office Tel/Fax: 03 6326 8899  
Scott Bakes: 0417 249 495

**Resellers**  
**Western Australia - ADS Automation**  
7 Crowley Street  
Port Kennedy WA 6168  
Ph: 08 9524 6575  
Fax: 08 9524 6875

**VICTORIA**  
12 Horscroft Place  
Moorabbin VIC 3189  
Ph: 03 9553 5455  
Fax: 03 9553 5486

**SOUTH AUSTRALIA**  
41 York Street  
Wingfield SA 5013  
Ph: 08 8260 2940  
Fax: 08 8260 7223

**New Zealand - Flexible Door Technology Ltd**  
9 Lock Crescent  
Hillsborough Christchurch NZ  
Ph: + 64 3 384 8036  
Fax: + 64 3 384 8046

**QUEENSLAND**  
1/18 Tolmer Place  
Springwood QLD 4127  
Ph: 07 3299 5922  
Fax: 07 3299 5955

**MANUFACTURING**  
23 Faunce Street  
West Gosford NSW 2250  
Ph: 02 4323 2386  
Fax: 02 4324 5411

Unit E, 657 Great South Road  
Penrose Auckland NZ  
Ph: + 64 9 580 2440  
Fax: + 64 9 580 2442

**Free call New Zealand 0800 267 888**

Technical data subject to change without notice - © Copyright by Albany Door Systems - 0



Data Sheet  
High Performance Door  
**M&I Re-Coil-Away™**

The World's Toughest Roll-Up Door

Highly reliable, durable door that withstands the harshest environments, operating cycle after cycle, year after year.

Patented Windlock and guide system provides a near airtight seal minimizing air infiltration and lowering energy costs.





# High Performance Door M&I Re-Coil-Away™



### ADVANTAGES OF THE M&I RE-COIL-AWAY™

- Strength and Reliability. Strong curtain and tight seal provide more resiliency against damage, extreme weather and high windloads.
- Low Maintenance. Fewer moving parts eliminate the need to replace cables, guide springs or pulleys. A breakaway bottom beam absorbs heavy impact and can be quickly reset with little effort.
- The Industry's Best Warranty. Albany Door Systems warrants SBR curtain fabric for the life of the door, and all other mechanical components – including balancing springs – for two (2) full years. Electrical is warranted for (1) one year.



### APPLICATIONS

- High cycle and high traffic areas where operational reliability is critical in harsh environments.

### DOOR DESIGN

- Breakaway Bottom Beam. Designed to withstand extremely heavy impact, the bottom bar can be reset quickly without special tools or replacement parts.
- High Performance Door Header. The M&I Re-Coil-Away™ top roll, idler barrel and top plates allow for unsurpassed heavy-duty strength and reliability.
- Choose between a **Springless System** or **Counterbalanced System**.
  - **Springless System.** The **Direct Drive** unit, and the built-in catching device, eliminates the need for a chain and sprocket.
  - **Counterbalance System.** Pre-mounted evenly balanced 100,000 cycle torsion spring provides smooth, fast and reliable operation cycle after cycle.

### SIDE FRAMES

- Self-supporting, heavy-duty steel side frames maintain Windloks within guides in high windloads of up to 142 km/hr, while enabling door panel to break away during impacts beyond this pressure.
- Patented Windlok and guide system provides a near airtight seal between environments.
- All M&I Re-Coil-Away™ frames are painted with chemical and corrosion resistant coating for improved long-term durability.

### DOOR PANEL

- Highly Resistant Fabric. M&I Re-Coil-Away™ fabric is designed for temperatures ranging from -40° to +82° C to protect sensitive indoor environments and reduce energy costs.
- Greater Strength. The M&I Re-Coil-Away™ SBR curtain delivers 270 k/cm² tensile strength per ASTM D412.
- Standard curtain comes in black SBR. Also available in blue or grey EPDM.

### DRIVE UNIT & CONTROL SYSTEM

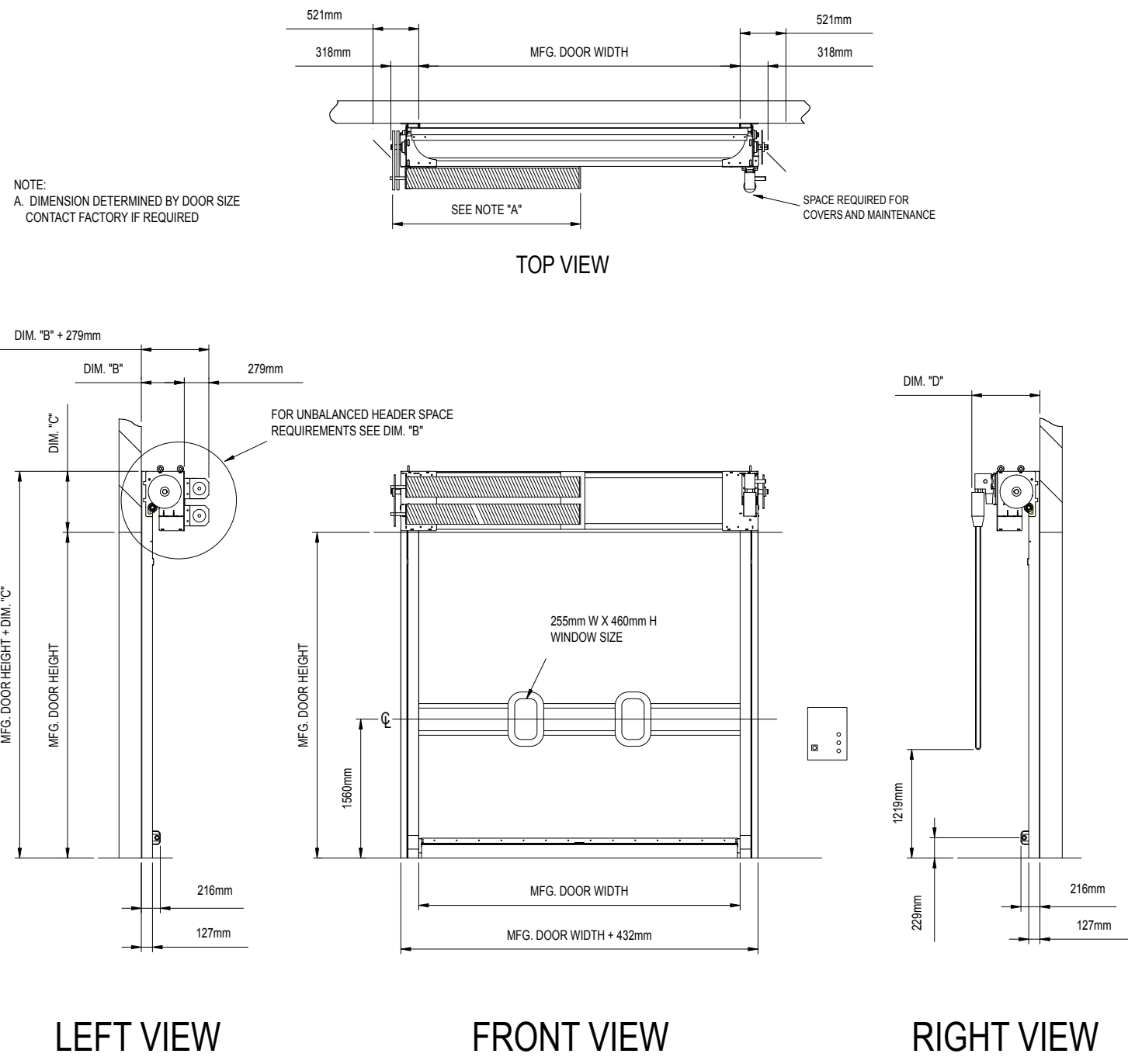
- High Cycle Drive Unit. Die cut aluminum gear box, electromagnetic spring operated break and thermally protected motor.
- Sophisticated Control Panel. ACS50, NEMA-4 and CUL listed. Standard controls are adjustable with automatic closing timer, emergency stop, two actuating push buttons and cycle counter.
  - **Springless System.** Direct drive unit, and the built-in catching device.
  - **Counterbalanced System.** Double chain with double sprocket drive system is used on doors over 5.5m x 5.5m.

### SAFETY FEATURES

- The M&I Re-Coil-Away™ comes standard with an electronic reversing bottom edge and a reflective eye or through-beam photocell.

Technical Data	
<b>Wind resistance</b>	142 km/hr Optional wind gussets for higher windloads
<b>Clear opening size</b>	Width 7,315mm Height 8,230mm Larger sizes available up to 15m x 11m (please consult factory)
<b>Opening Speed</b>	Springless System Up to 1m/sec maximum Counterbalance System Up to 1.2m/sec maximum
<b>Drive Unit &amp; Control System</b>	Input Voltage 208-240V, 440-480V, 575-600V Motor Up to 3 HP-phase, 60 Hz, 20 amps Control Panel ACS50; NEMA 4, CUL listed Limit Adjustment From drive Direct Drive Unit built-in catching device for springless system Photocell Reflective eye or through-beam
<b>Components</b>	Door Roll Tube 4.8mm thick steel tube complying with ASTM A513 Idler Barrel 915mm thick steel tube, supported by C1018 steel shafts Side Frame Self-supporting, heavy-duty steel painted with chemical and corrosion resistant coating Bottom Beam Steel construction with breakaway center
<b>Door</b>	Fabric Double-layered SBR polyester cord center with 270 k/cm² tensile strength per ASTM D412.
<b>Counterbalance System</b>	100K cycle torsion spring (standard)
<b>Springless System</b>	Direct Drive Unit
<b>Bottom Beam</b>	Reversing Edge Fail safe auto stop and reverse (standard)
Options	
• Windbar for operations under heavy windloads	
• Gussets for higher windloads	
• Headroom clearances of 533mm and 660mm	
• PLC control panel	
• Full roll cover	
• 200K cycle torsion spring	
• Windows	
• Stainless steel and hot dipped galvanized steel	
• Horns, lights, motion detectors and floor loops detector	

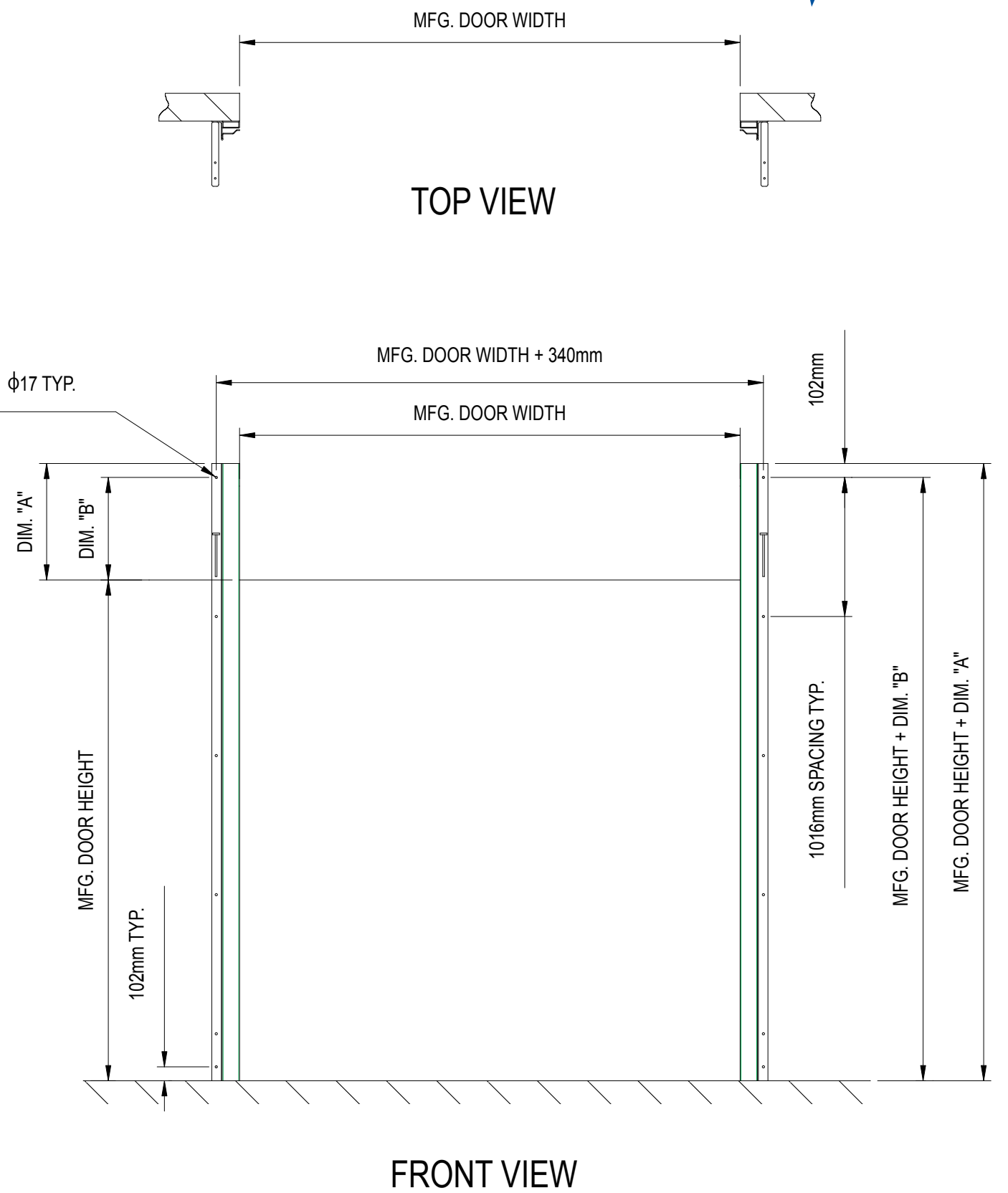
# General Drawing M&I Re-Coil-Away™



MFG. DOOR SIZE	DIM. "B"	DIM. "C"	DIM. "D"
≤ 3.66m W X 3.66m H	489mm	686mm	787mm
≥ 3.66m W X 3.66m H	679mm	851mm	1111mm

LARGER SIZES AVAILABLE UP TO 15M X 11M

# Fixing Drawing M&I Re-Coil-Away™



MFG. DOOR SIZE	DIM. "A"	DIM. "B"
≤ 3.66m W X 3.66m H	686mm	686mm
≥ 3.66m W X 3.66m H	851mm	851mm

LARGER SIZES AVAILABLE UP TO 15M X 11M